

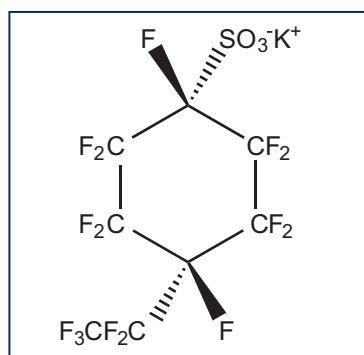


August 16, 2017

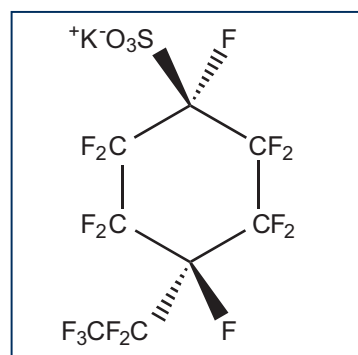
NEW PRODUCT

Native Potassium Perfluoro-4-ethylcyclohexanesulfonate **PFECHS**

Perfluoro-4-ethylcyclohexanesulfonate has been primarily used as an additive in hydraulic fluid formulations that are designed to inhibit erosion in hydraulic systems. The use of these hydraulic fluids in commercial aircraft was identified as a likely source of this compound in surface waters and fish from the Great Lakes of North America; PFECHS contamination is now being reported internationally. PFECHS itself exists as a pair of *cis* and *trans* isomers, but commercial materials also contain substantial percentages of impurities including constitutional isomers that exhibit the same mass-to-charge ratio as PFECHS during mass spectrometric detection. Unfortunately, the use of inadequately characterized reference standards increases the uncertainty associated with the generated data. For this reason, **Wellington** has prepared a certified reference standard (chemical purity > 98%) which contains a known ratio of the *cis/trans* isomers of PFECHS (as determined by ^{19}F NMR).



cis isomer



trans isomer

Catalogue Number	Product (methanol)	Qty	Conc
PFECHS	Perfluoro-4-ethylcyclohexanesulfonate	1.2 ml	50 µg/ml

Distributed Throughout Europe and Middle East By-

Greyhound Chromatography & Allied Chemicals
6 Kelvin Park, Birkenhead,
Merseyside, CH41 1LT, U.K.
Tel: (+44)-0-151-649-4000 Fax: (+44)-0-151-649-4001
E-mail: info@greyhoundchrom.com
Web: www.greyhoundchrom.com



Quality
ISO 9001